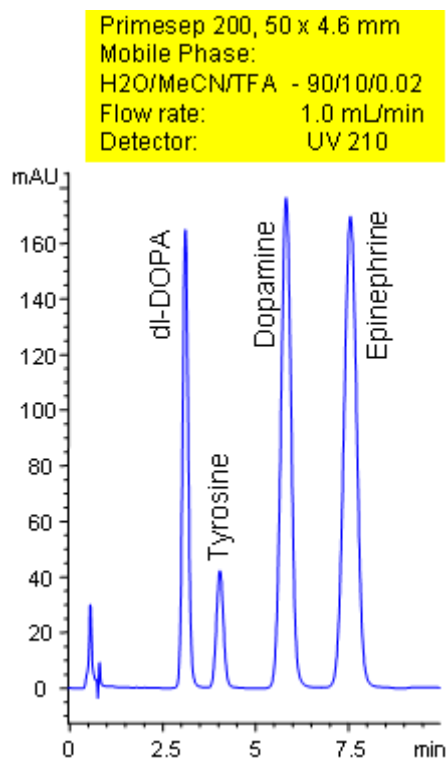


# HPLC Separation of Catecholamines

<https://sielc.com/Application-HPLC-Separation-of-Catecholamines>

## Chromatogram



## Description

Primesep 200 separates catecholamines in less than 8 minutes. Tyrosine, dl-DOPA, dopamine, epinephrine are baseline resolved by a combination of reversed-phase, ion-exchange, and ion-exclusion mechanisms. Excellent peak shape results with a mass spec compatible mobile phase of water, acetonitrile (MeCN, ACN) and trifluoroacetic acid (TFA) with UV detection at 210 nm.

## Method Parameters

Mobile Phase	MeCN/H <sub>2</sub> O
Buffer	TFA
Flow Rate	1.0 ml/min
Detection	UV, 210 nm
Class of Compounds	Drug, Acid, Hydrophilic, Ionizable, Hormone
Analyzing Compounds	Tyrosine, DOPA, Epinephrine, Dopamine

## HPLC Column Used

**Primesep 200, 4.6x50 mm, 5 µm, 100A**

[Order this column at hplc-shop.de](http://hplc-shop.de) →