

# HPLC Separation of Barium Cation in the Presence of Citric Acid, Sucrose and Tween 80

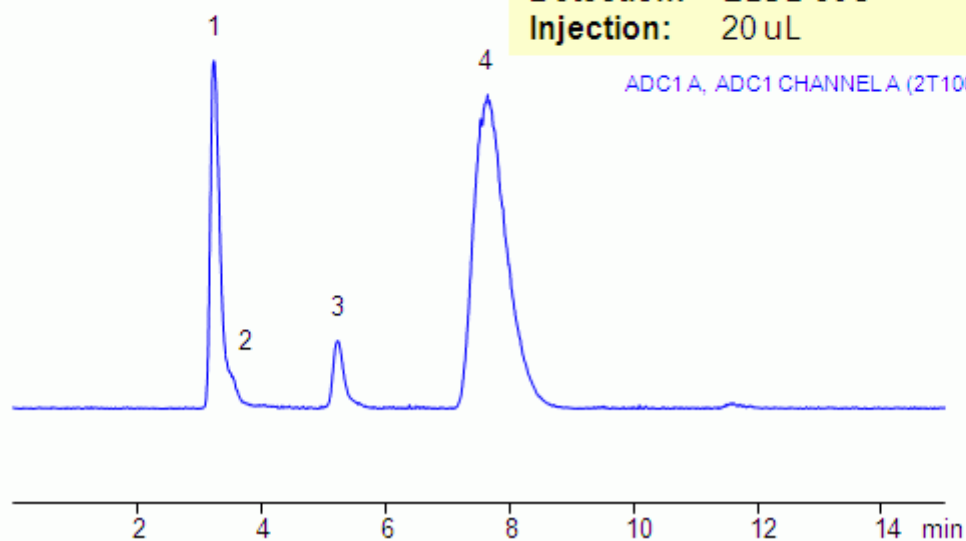
<https://sielc.com/Application-HPLC-Separation-of-Barium-Cation-in-the-Presence-of-Citric-Acid-Sucrose-and-Tween-80>

## Chromatogram

1. Sucrose
2. Tween 80 (partial elution)
3. Barium Ion
4. Citric acid

**Column:** Obelisc N  
**Size:** 4.6 x 150mm  
**Mobile phase:** MeCN -20% with 15 mM AmAc pH 4.0  
**Flow:** 1.0 mL/min  
**Detection:** ELSD 50C  
**Injection:** 20 uL

ADC1 A, ADC1 CHANNEL A (2T100325A|001-5401.D)



chr\_288.gif

## Description

Barium ion and citric acid are analyzed in the presence of sucrose and Tween 80 on Obelisc N HILIC mixed-mode column. Both compounds are retained in ion-exchange mode and HILIC is not employed with this method. Obelisc N HPLC column has basic and acidic ion-exchange groups separated by long hydrophilic chain. Presence of that long chain allows both cation- and anion-exchange mechanisms to exist simultaneously. Obelisc N column can be used for analysis of cation and anions in HILIC/ion-exchange mode and in ion-exchange mode. Analytes can be monitored by ELSD/CAD and LC/MS.

## Method Parameters

<b>Mobile Phase</b>	MeCN
<b>Buffer</b>	AmAc pH 4.0
<b>Flow Rate</b>	1.0 ml/min
<b>Detection</b>	ELSD
<b>Class of Compounds</b>	Acid, Ion, Hydrophobic, Ionizable
<b>Analyzing Compounds</b>	Barium ion, Citric acid, Sucrose, Tween 80

## HPLC Column Used

**Obelisc N, 4.6×150 mm, 5 µm, 100A**

[Order this column at hplc-shop.de](https://www.hplc-shop.de) →