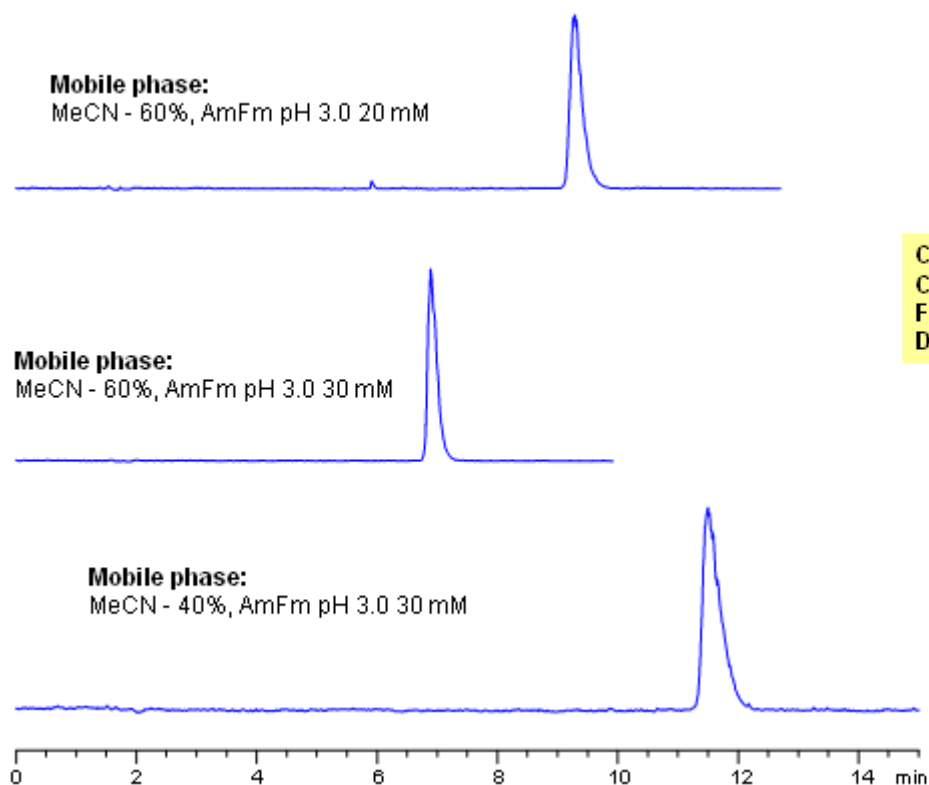


HPLC Retention of N-Cyclohexylsulfamic Acid

<https://sielc.com/Application-HPLC-Retention-of-N-Cyclohexylsulfamic-Acid>

Chromatogram



Column: Primesep D
Column size: 150 x 4.6 mm
Flow rate: 1.0 mL/min
Detection: ELSD 80°C

Description

N-Cyclohexylsulfamic acid (cyclamic acid), sodium or calcium salts artificial sweeteners. Cyclamate is hydrophilic strongly acidic compound. Cyclamic acid was analyzed on a Primesep D HPLC column using acetonitrile water ammonium formate buffer and ELSD. This molecule is not UV active and can be monitored by ELSD, Corona, or LC/MS detection. Compound is retained by weak reversed-phase and strong anion-exchange mechanism.