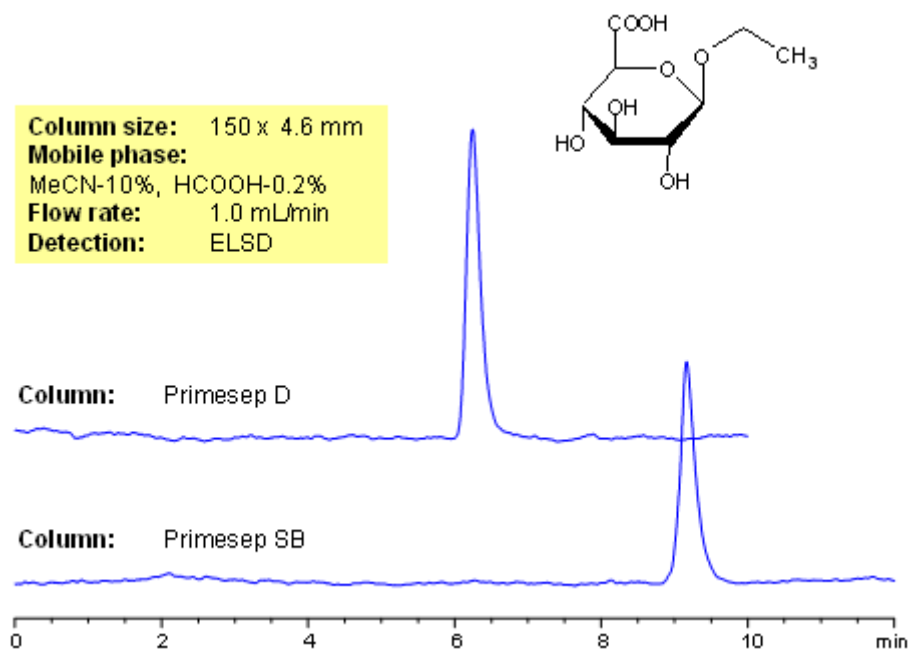


# HPLC Retention of Ethylglucuronide

<https://sielc.com/Application-HPLC-Retention-of-Ethylglucuronide>

## Chromatogram



## Description

Ethyl glucuronide is an ethyl alcohol metabolite that is a useful marker of alcohol consumption. Primesep D and Primesep SB columns retain ethyl glucuronide with symmetrical peak shape by a combination of reversed-phase and anion-exchange mechanisms. The HPLC separation uses a mobile phase of water, acetonitrile (MeCN, ACN), and acetic acid (HOAc) with evaporative light scattering detection (ELSD).