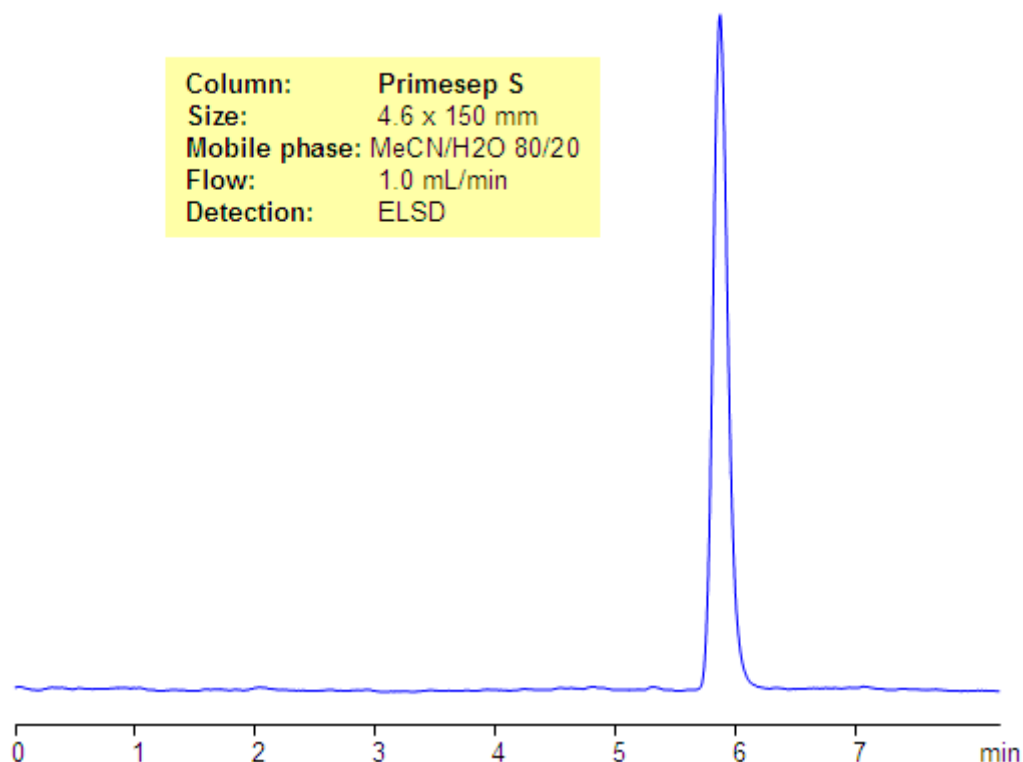


HPLC Analysis of Xylitol on Primesep S Column

<https://sielc.com/Application-HPLC-Analysis-of-Xylitol-on-Primesep-S-Column>

Chromatogram



Description

Xylitol is a polyalcohol which is used as a sweetener for people with diabetes. Xylitol is naturally found in the fibers of fruits and vegetables. It is a very highly polar, non-ionizable molecule. Xylitol can be well retained on the Primesep S HILIC column. It has a relatively high water concentration in the mobile phase that helps to dissolve xylitol at high acetonitrile HILIC applications. Polar surface on the Primesep S column provides well controlled retention time and can be used as a robust method for analysis of various sugar-like molecules.

Method Parameters

Mobile Phase	MeCN/H ₂ O – 80/20%
Buffer	AmFm pH 3.0- 10 mM
Flow Rate	1.0 ml/min
Detection	ELSD
Class of Compounds	Sugar, Hydrophilic, Ionizable
Analyzing Compounds	Xylitol

HPLC Column Used

Primesep S, 4.6x150 mm, 5 µm, 100A

[Order this column at hplc-shop.de →](https://www.hplc-shop.de)