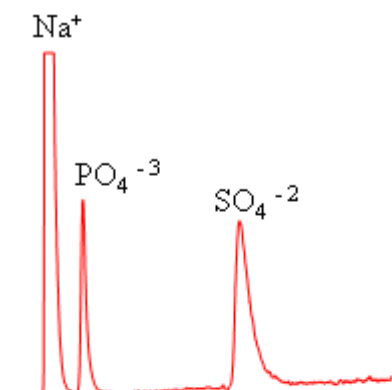


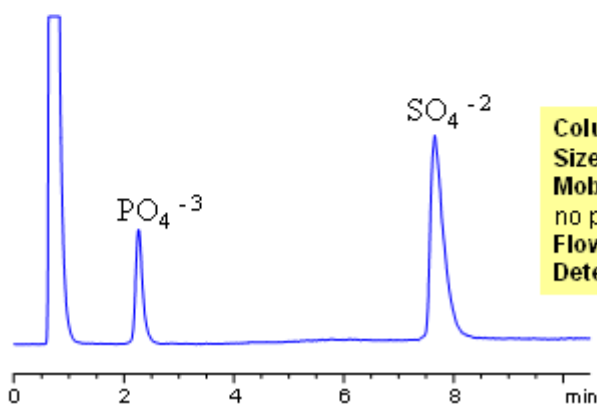
# HPLC Analysis of Sulfate and Phosphate Ions on Primesep Columns

<https://sielc.com/Application-HPLC-Analysis-of-Sulfate-and-Phosphate-Ions-on-Primesep-Columns>

## Chromatogram



**Column:** Primesep B2  
**Size:** 50 x 4.6 mm  
**Mobile phase:** MeCN –10%, AmFm  
pH 3.0 gradient 20-200 mM in 10 min  
**Flow:** 1.0 mL/min  
**Detection:** ELSD



**Column:** Primesep D  
**Size:** 50 x 3.0 mm  
**Mobile phase:** MeCN –10%, AmAc  
no pH gradient 20-200 mM in 10 min  
**Flow:** 0.5 mL/min  
**Detection:** ELSD

## Description

Inorganic and organic ions are usually analyzed by ion-exchange mechanism. In this application, we used short Primesep B2 and Primesep D mixed-mode HPLC columns to retain and separate phosphate and sulfate ions. Both ions are retained by ion-exchange mechanism. Detection technique for analysis of these anions is Evaporative Light-Scattering Detector (ELSD).