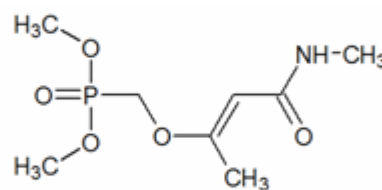
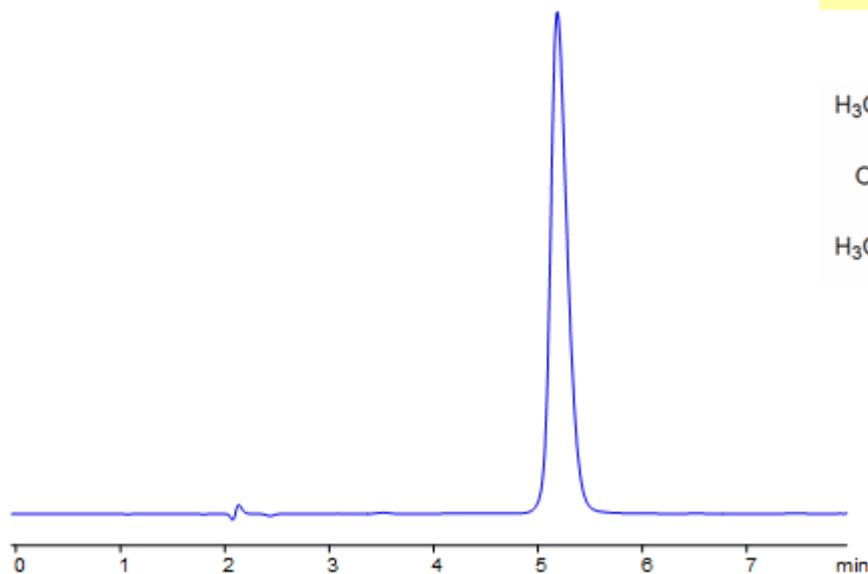


HPLC Analysis of Monocrotophos

<https://sielc.com/Application-HPLC-Analysis-of-Monocrotophos>

Chromatogram

Column: Obelisc R
Dimensions: 150 x 4.6mm
Mobile Phase: 50% MeCN
Buffer: 20mM AmFm pH 3.0
Flow: 1.0 ml/min
Detection: UV 250 nm



Description

Banned in the U.S. and many other countries, Monocrotophos is a cheap and toxic organophosphate insecticide. It is especially toxic to birds, being blamed for widespread bird kills. Obelisc R was used to retain monocrotophos and separate it from impurities. Obelisc R contains embedded ionic and hydrophobic groups which can assist in fine tuning separations. Method is LC/MS compatible and can be used as a general approach for analyzing monocrotophos and other organophosphate insecticides.

Method Parameters

Mobile Phase	MeCN – 50%
Buffer	AmFm pH 3.0- 20 mM
Flow Rate	1.0 ml/min
Detection	UV, 250 nm
Class of Compounds	Insecticide, Herbicide, Fungicide, Hydrophobic, Ionizable
Analyzing Compounds	Monocrotophos

HPLC Column Used

Obelisc R, 4.6×150 mm, 5 µm, 100A

[Order this column at hplc-shop.de](http://hplc-shop.de) →