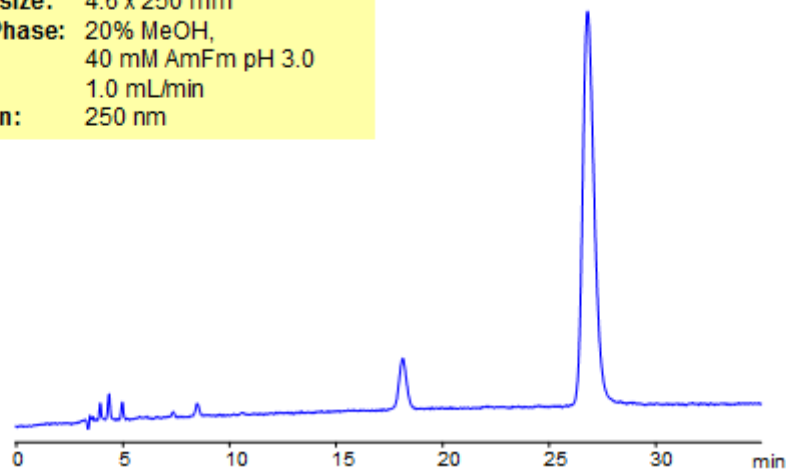


# HPLC Analysis of Cefradine

<https://sielc.com/Application-HPLC-Analysis-of-Cefradine>

## Chromatogram

**Column:** Legacy L1  
**Column size:** 4.6 x 250 mm  
**Mobile Phase:** 20% MeOH,  
**Buffer:** 40 mM AmFm pH 3.0  
**Flow:** 1.0 mL/min  
**Detection:** 250 nm



## Description

Cefradine is a drug used to treat bacterial infections of the respiratory or urinary tracts and skin or soft tissue. Legacy L1 was used to retain cefradine by reverse phase mechanism. Legacy L1 uses embedded C18 groups on porous silica and is useful for many USP HPLC applications. Comparisons to Phenomenex columns are available by request.

## Method Parameters

<b>Mobile Phase</b>	MeOH – 15%
<b>Buffer</b>	AmFm pH 3.0- 40 mM
<b>Flow Rate</b>	1.0 ml/min
<b>Detection</b>	UV, 250 nm
<b>Class of Compounds</b>	Drug, Hydrophilic, Ionizable
<b>Analyzing Compounds</b>	Cefradine

## HPLC Column Used

**Legacy L1, 4.6x250 mm, 5 µm, 100A**

[Order this column at hplc-shop.de →](https://www.hplc-shop.de)