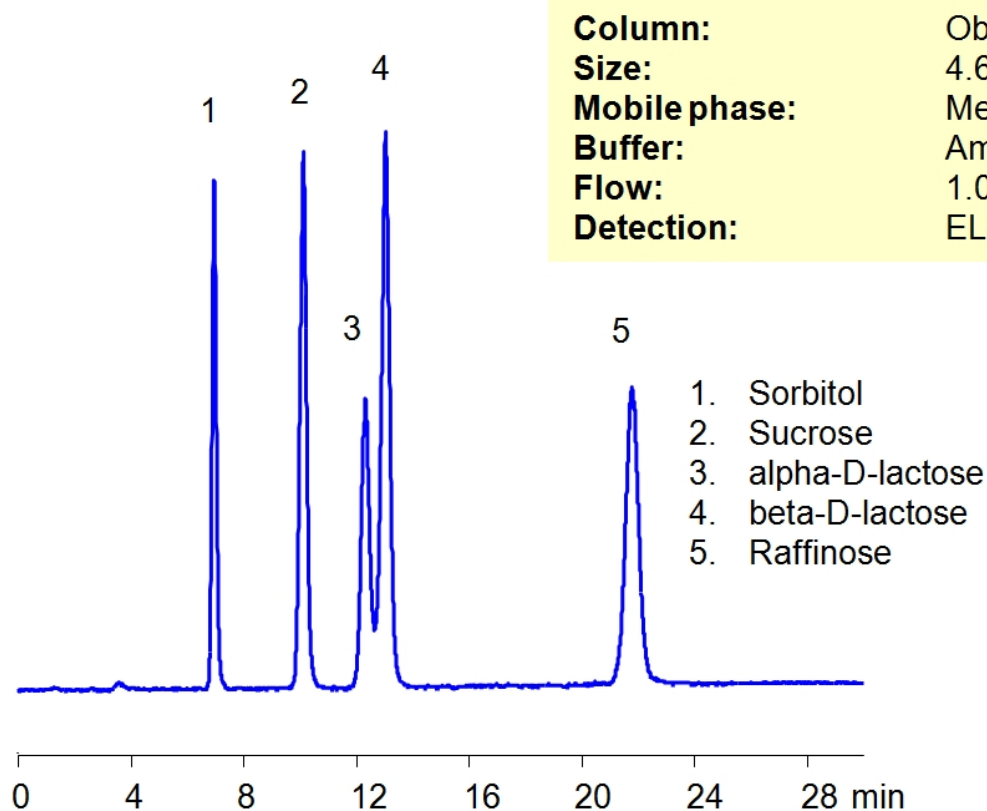


# HILIC Separation of Sugars on Obelisc N

<https://sielc.com/Application-HILIC-Separation-of-Sugars-on-Obelisc-N>

## Chromatogram



## Description

Common sugars can be separated on an Obelisc N HILIC/cation-exchange column with LC/MS compatible mobile phase. Highly polar surface of Obelisc N column provides good retention for sorbitol, sucrose, lactose and raffinose. Other sugars can be separated using this column.

## Method Parameters

<b>Mobile Phase</b>	MeCN/H <sub>2</sub> O
<b>Buffer</b>	AmFm
<b>Flow Rate</b>	1.0 ml/min
<b>Detection</b>	ELSD
<b>Class of Compounds</b>	Hydrophilic, Ionizable, Sugars
<b>Analyzing Compounds</b>	Sorbitol, Sucrose, Lactose, Raffinose

## HPLC Column Used

**Obelisc N, 4.6×150 mm, 5 µm, 100A**

[Order this column at hplc-shop.de](http://hplc-shop.de) →