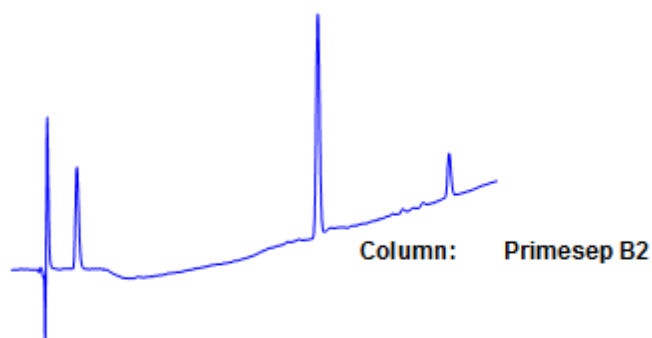


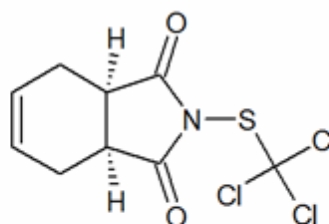
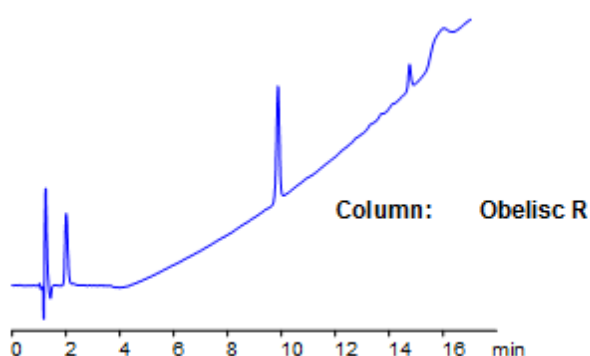
Captan Separation on Obelisc and Primesep Mixed-Mode HPLC Columns

<https://sielc.com/Application-Captan-Separation-on-Obelisc-and-Primesep-Mixed-Mode-HPLC-Columns>

Chromatogram



Dimensions: 150 x 2.1 mm
Mobile Phase: MeCN gradient from 10% to 70% in 15 min, 7 min hold. AmAc pH 4.5 from 20 mM to 50 mM in 15 min, 7 min hold
Flow: 0.4 ml/min
Detection: UV 250 nm



Description

Captan is a phthalimide fungicide which is typically used as a component in industrial pesticide mixtures. The EURL included a QuChERS (Quick, Easy, Cheap, Rugged, and Safe) method for captan as a target pesticide for EUPT-SRM. Obelisc R was used to retain captan and separate it from impurities. Primesep B2 contains embedded basic ion-pairing groups while Obelisc R contains embedded ionic and hydrophobic groups which can assist in fine tuning separations. Method is LC/MS compatible and can be used as a general approach for analyzing captan and dozens of other pesticides.

Method Parameters

Mobile Phase	Gradient MeCN – 10-70%, 15 min, 7 min hold
Buffer	Gradient AmAc pH 4,5- 20-50 mM, 15 min, 7 min hold
Flow Rate	0.4 ml/min
Detection	UV, 250 nm
Class of Compounds	Insecticide, Herbicide, Fungicide, Hydrophobic, Ionizable
Analyzing Compounds	Captan

HPLC Column Used

Obelisc R, 2.1×150 mm, 5 µm, 100A

[Order this column at hplc-shop.de](https://www.hplc-shop.de) →