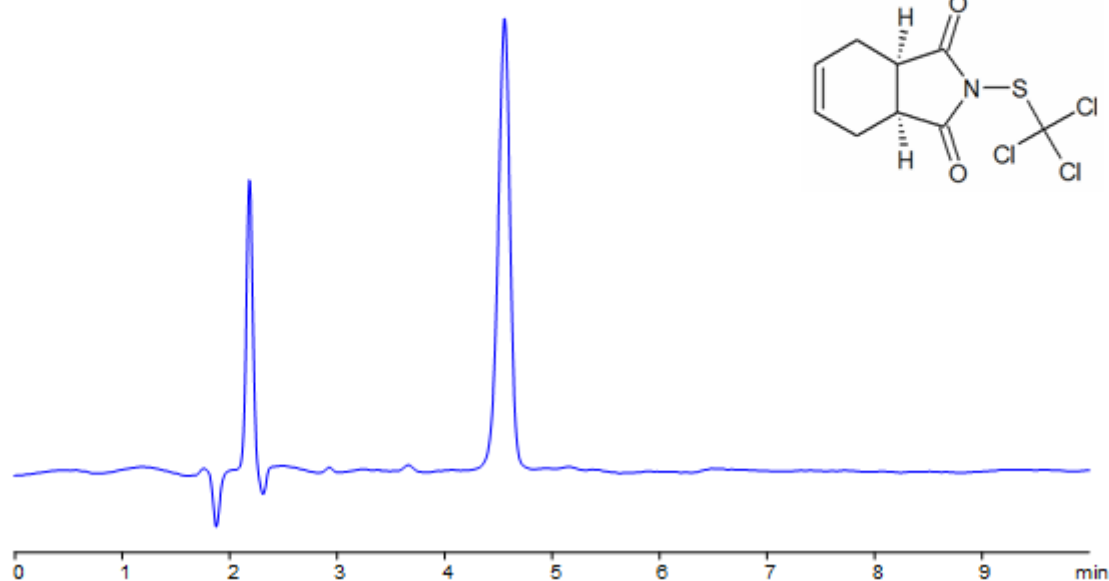


Captan Retention on Obelisc R HPLC Column

<https://sielc.com/Application-Captan-Retention-on-Obelisc-R-HPLC-Column>

Chromatogram

Column: Obelisc R
Dimensions: 150 x 4.6mm
Mobile Phase: 45% MeCN
Buffer: 40mM AmFm pH 3.0
Flow: 1.0 ml/min
Detection: UV 250 nm



Description

Captan is a phthalimide fungicide which is typically used as a component in industrial pesticide mixtures. The EURL included a QuEChERS (Quick, Easy, Cheap, Rugged, and Safe) method for captan as a target pesticide for EUPT-SRM. Obelisc R was used to retain captan and separate it from impurities. Obelisc R contains embedded ionic and hydrophobic groups which can assist in fine tuning separations. Method is LC/MS compatible and can be used as a general approach for analyzing captan.

Method Parameters

Mobile Phase	MeCN – 45%
Buffer	AmFm pH 3.0- 40 mM
Flow Rate	1.0 ml/min
Detection	UV, 250 nm
Class of Compounds	Insecticide, Herbicide, Fungicide, Hydrophobic, Ionizable
Analyzing Compounds	Captan

HPLC Column Used

Obelisc R, 4.6×150 mm, 5 µm, 100A

[Order this column at hplc-shop.de](http://hplc-shop.de) →