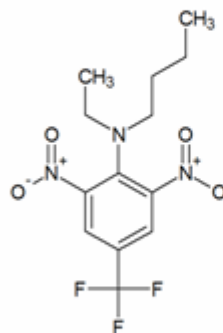
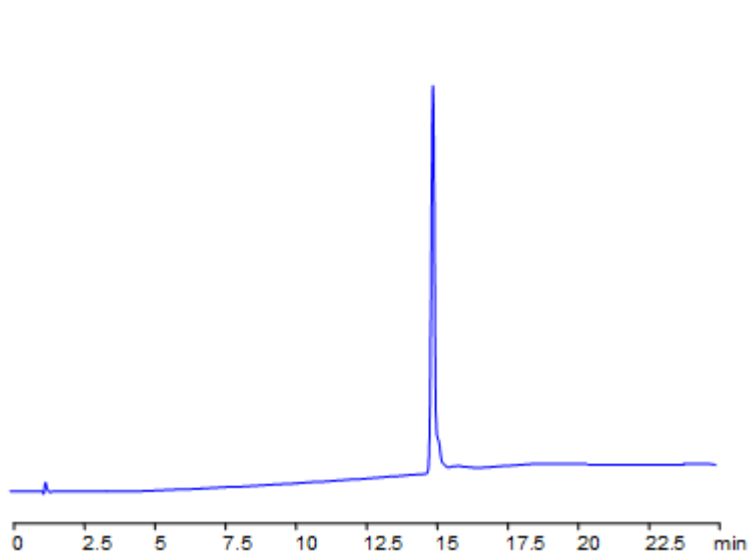


Benfluralin Analysis on Obelisc R HPLC Column

<https://sielc.com/Application-Benfluralin-Analysis-on-Obelisc-R-HPLC-Column>

Chromatogram

Column:	Obelisc R
Dimensions:	150 x 2.1mm
Mobile Phase:	MeCN gradient from 10% to 70% in 15 min, 7 min hold. AmAc pH 4.5 from 20 mM to 50 mM in 15 min, 7 min hold
Flow:	0.4 ml/min
Detection:	UV 250 nm



Description

Benfluralin is a dinitroaniline herbicide used on grasses and weeds. The EURL (European Union Reference Laboratory) included benfluralin in a study using a multiresidue method by GC-MS/MS in olive oil. Obelisc R was used to separate benfluralin and its impurities using a single multiresidue method, which can be used for many pesticides. Obelisc R contains embedded ionic and hydrophobic groups which can assist in fine tuning. Method is LC/MS compatible and can be used as a general approach for analyzing benfluralin and dozens of other pesticides.

Method Parameters

Mobile Phase	Gradient MeCN – 10-70%, 15 min, 7 min hold
Buffer	Gradient AmAc pH 4.5- 20-50 mM, 15 min, 7 min hold
Flow Rate	0.4 ml/min
Detection	UV, 250 nm
Class of Compounds	Insecticide, Herbicide, Fungicide, Hydrophobic, Ionizable
Analyzing Compounds	Benfluralin

HPLC Column Used

Obelisc R, 2.1×150 mm, 5 µm, 100A

[Order this column at hplc-shop.de](https://www.hplc-shop.de) →