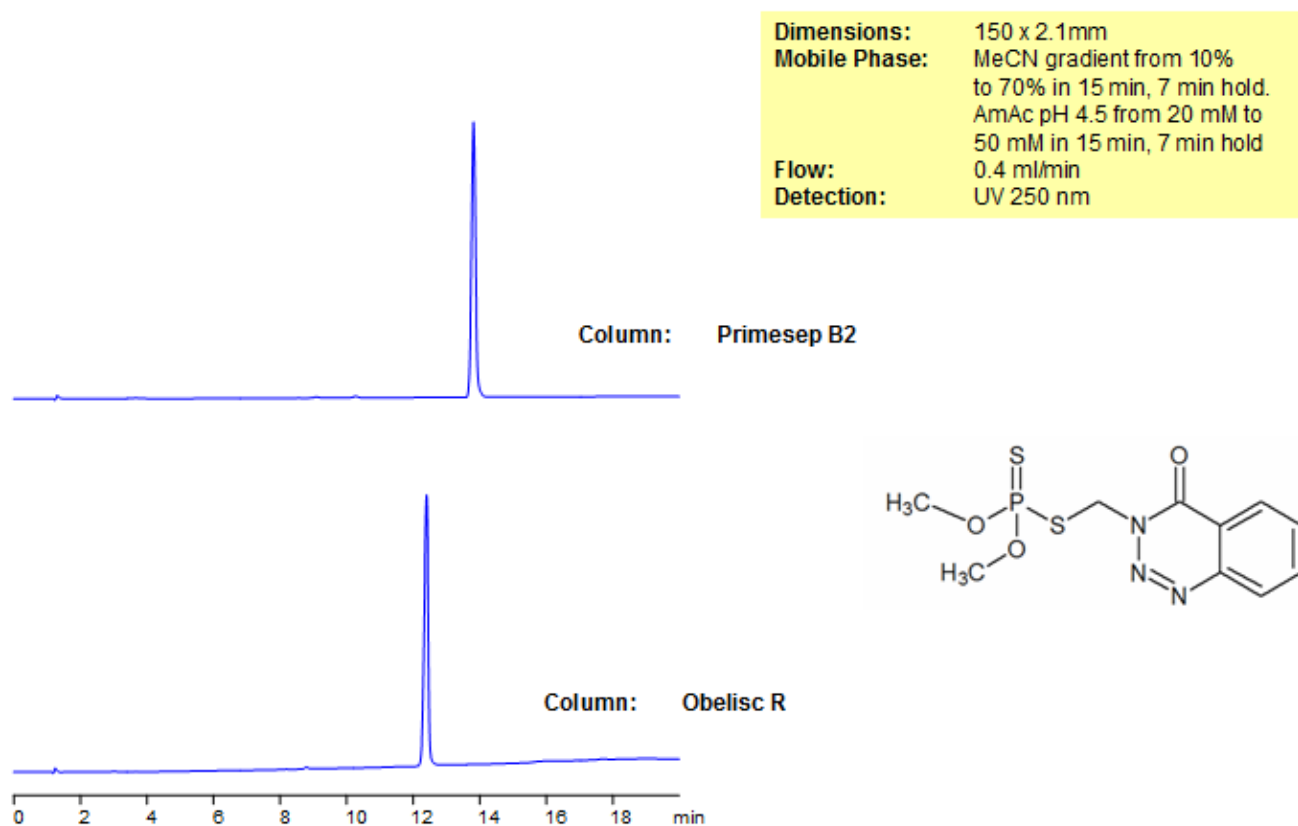


Azinphos-ethyl Analysis on Mixed-Mode HPLC Columns

<https://sielc.com/Application-Azinphos-ethyl-Analysis-on-Mixed-Mode-HPLC-Columns>

Chromatogram



Description

Azinphos-ethyl is a highly toxic organophosphate insecticide. Azinphos-ethyl was retained on both Obelisc R and Primesep B2 mixed-mode HPLC columns. Primesep B2 contains embedded basic ion-pairing groups while Obelisc R contains embedded ionic and hydrophobic groups which can assist in fine tuning separations. Method is LC/MS compatible and can be used as a general approach for analyzing azinphos-ethyl and other organophosphate insecticides.

Method Parameters

Mobile Phase	Gradient MeCN – 10-70%, 15 min, 7 min hold
Buffer	Gradient AmAc pH 3.0- 20-60 mM, 15 min, 7 min hold
Flow Rate	0.4 ml/min
Detection	UV, 250 nm
Class of Compounds	Insecticide, Herbicide, Fungicide, Hydrophobic, Ionizable
Analyzing Compounds	Azinphos-ethyl

HPLC Column Used

Obelisc R, 2.1×150 mm, 5 µm, 100A

[Order this column at hplc-shop.de](http://hplc-shop.de) →