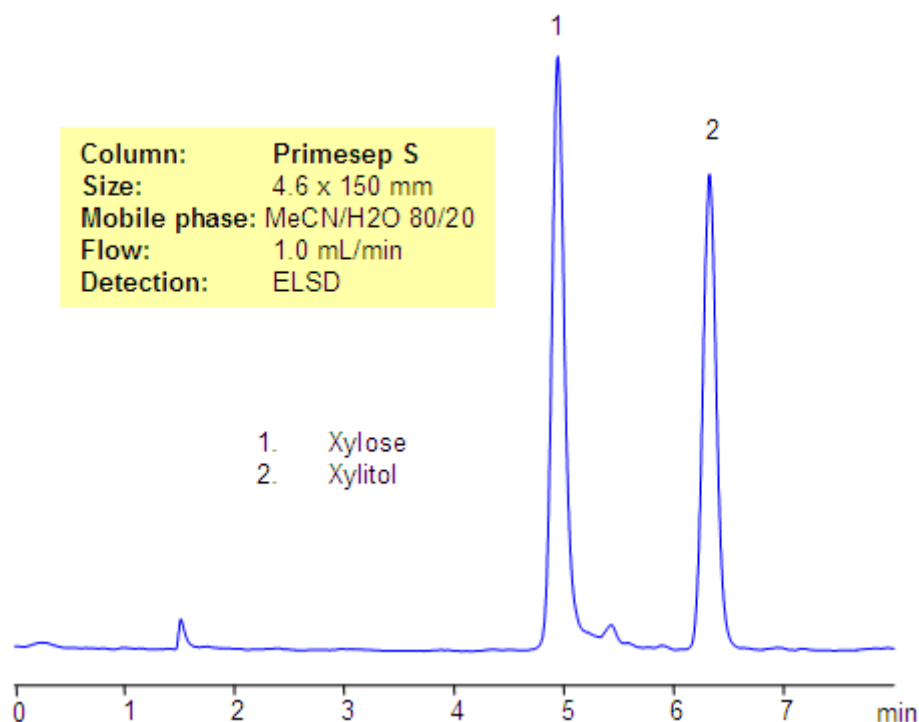


HPLC Analysis on Xylose and Xylitol on Primesep S Column

<https://sielc.com/Appliccation-HPLC-Analysis-on-Xylose-and-Xylitol-on-Primesep-S-Column>

Chromatogram



Description

Xylose is a monosaccharide which can be found in wood. Xylitol is a sugar-like, open chain polyalcohol. Xylitol and xylose were separated on the Primesep S HILIC/mixed-mode column. Both compounds are retained by a single HILIC mechanism. This method is compatible with ELSD, CAD, and RI detection and can be used for analysis of various monosaccharides in complex mixtures.

Method Parameters

Mobile Phase	MeCN/H ₂ O – 80/20%
Buffer	AmFm pH 3.0- 10 mM
Flow Rate	1.0 ml/min
Detection	ELSD
Class of Compounds	Sugar, Hydrophilic, Ionizable
Analyzing Compounds	Xylose, Xylitol

HPLC Column Used

Primesep S, 4.6x150 mm, 5 µm, 100A

[Order this column at hplc-shop.de →](https://www.hplc-shop.de)