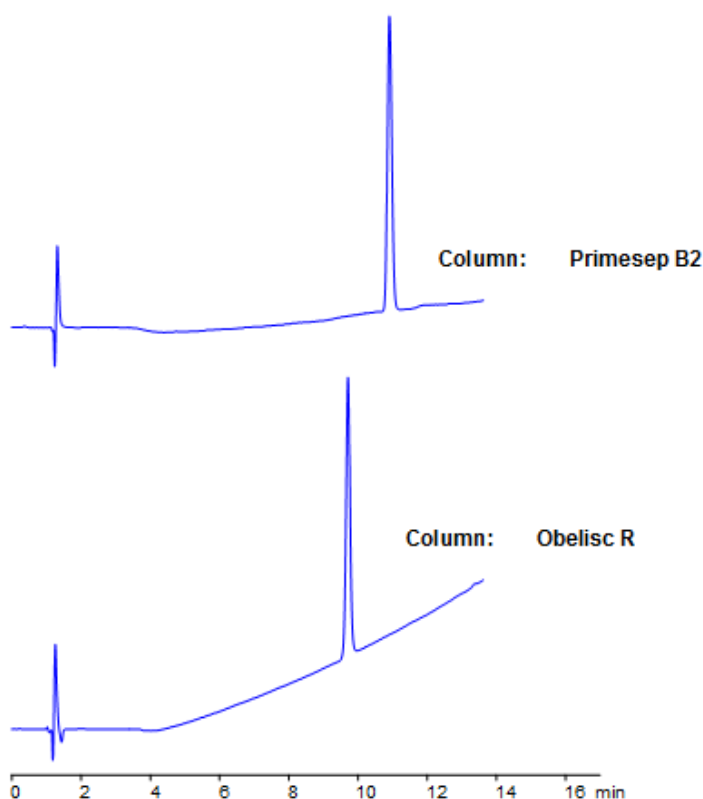


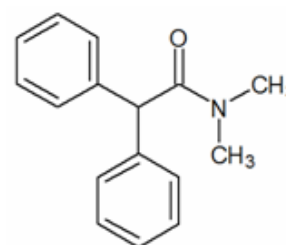
Diphenamid Separation on Primesep B2 Column

<https://sielc.com/Applicatio-Diphenamid-Separation-on-Primesep-and-Obelisc-Mixed-Mode-HPLC-Columns>

Chromatogram



Dimensions: 150 x 2.1mm
Mobile Phase: MeCN gradient from 10% to 70% in 15 min, 7 min hold. AmAc pH 4.5 from 20 mM to 50 mM in 15 min, 7 min hold
Flow: 0.4 ml/min
Detection: UV 250 nm



Description

Diphenamid is a pre-emergence herbicide used in production of tobacco, groundnuts, and tomatoes. Obelisc R and Primesep B2 were used to retain diphenamid and separate it from impurities. Primesep B2 contains embedded basic ion-pairing groups while Obelisc R contains embedded ionic and hydrophobic groups which can assist in fine tuning separations. Method is LC/MS compatible and can be used as a general approach for analyzing diphenamid and dozens of other pesticides.

Method Parameters

Mobile Phase	Gradient MeCN – 25-70%, 15 min, 7 min hold
Buffer	Gradient AmAc pH 3.0- 30-60 mM, 15 min, 7 min hold
Flow Rate	0.4 ml/min
Detection	UV, 250 nm
Class of Compounds	Insecticide, Herbicide, Fungicide, Hydrophobic, Ionizable
Analyzing Compounds	Diphenamid

HPLC Column Used

Primesep B2, 2.1×150 mm, 5 µm, 100A

[Order this column at hplc-shop.de](http://hplc-shop.de) →