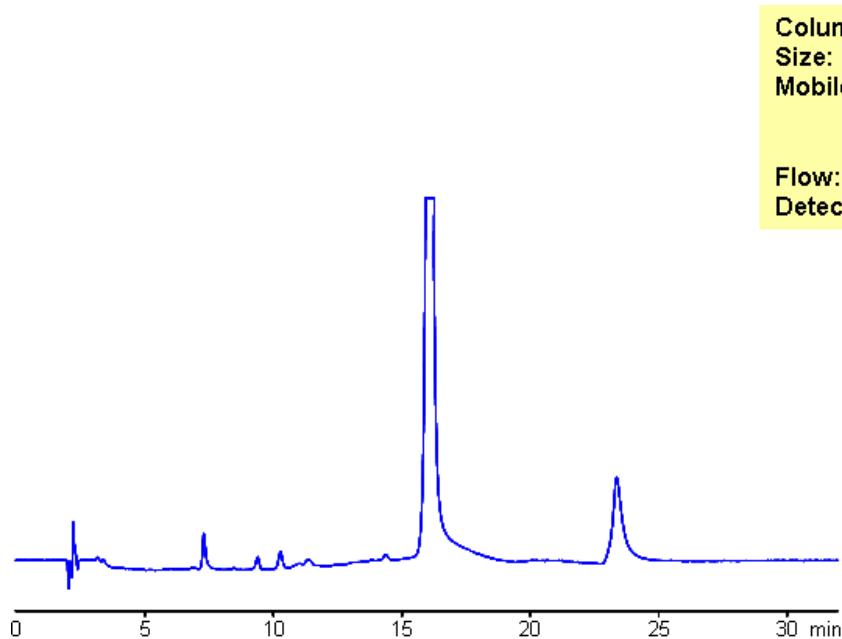


Analysis of Antibiotic Flumequine and Related Impurities in Mixed-Mode Chromatography

https://sielc.com/Analysis_of_Antibiotic_Flumequine_and_Related_Impurities_in_Mixed-Mode_Chromatography

Chromatogram



Column: Obelisc R
Size: 4.6 x 150 mm
Mobile phase: MeCN gradient 5% to 30% in 10 min ,
5 min hold, Formic acid gradient
0.05% to 0.3% in 10 min, 5 min hold
Flow: 1.0 mL/min
Detection: UV 270 nm

Description

The antibiotic Flumequine is typically used in veterinary medicine. Flumequine and related impurities have been found in animals later sold for meat. Analysis was performed by by mixed-mode chromatography on Primesep D, a reverse-phase column with embedded basic ion-pairing groups and Obelisc R with multiple separation modes (RP,NP,IE).