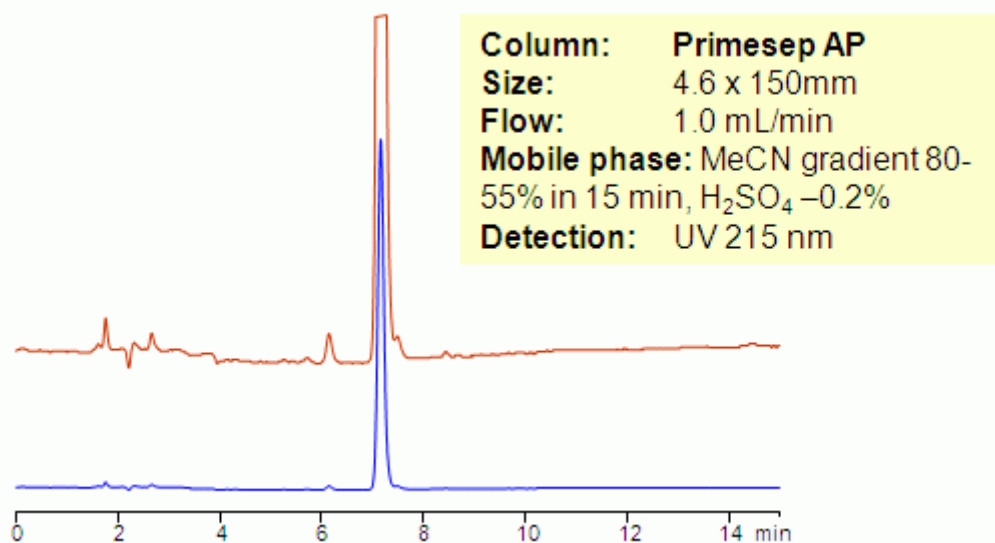


# Analysis of m-Xylylenediamine (MXDA)

<https://sielc.com/Application-Analysis-of-m-Xylylenediamine-MXDA>

## Chromatogram



## Method Parameters

Mobile Phase	MeCN/H <sub>2</sub> O
Buffer	H <sub>2</sub> SO <sub>4</sub> - 0.2 %
Flow Rate	1.0 ml/min
Detection	UV, 215 nm
Class of Compounds	Drug, Basic, Hydrophobic, Ionizable, Zwitterionic
Analyzing Compounds	m-Xylylenediamine (MXDA)

## HPLC Column Used

**Primesep AP, 4.6x150 mm, 5 µm, 100A**

[Order this column at hplc-shop.de →](#)