

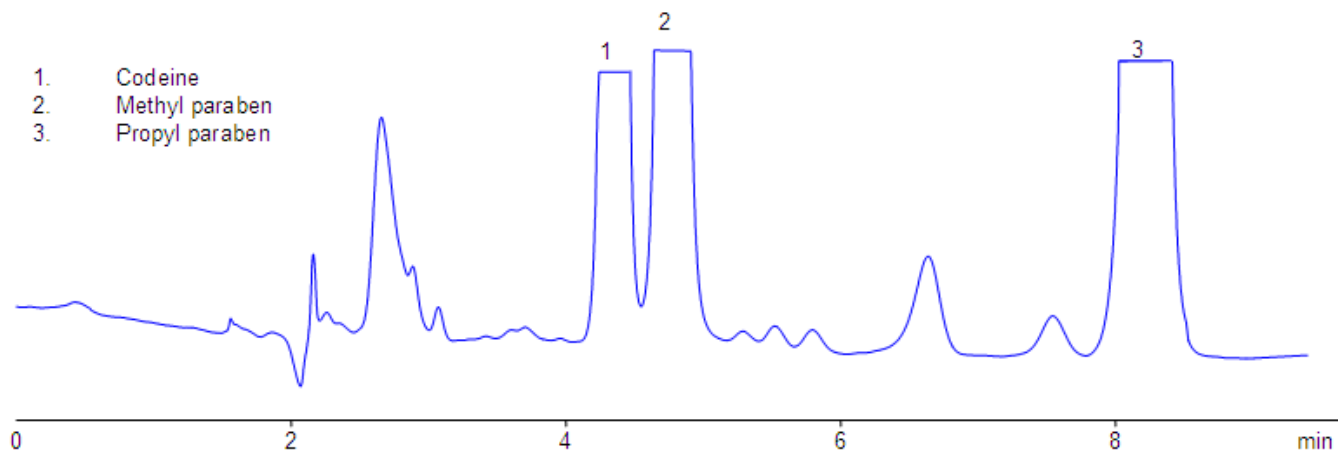
Analysis of Codeine and Related Impurities in Drug Composition

<https://sielc.com/Application-Analysis-of-Codeine-and-Related-Impurities-in-Drug-Composition>

Chromatogram

Mobile phase: 35% MeCN with 15 mM
TEA phosphate pH 3.35

Column: Primesep C
Size: 4.6 x 150 mm
Detection: UV 210 nm
Flow: 1.0 mL/min



Method Parameters

Mobile Phase	MeCN/H ₂ O – 35/65%
Buffer	TEAPh Ph 3.5 – 15 Mm
Flow Rate	1.0 ml/min
Detection	UV, 210 nm
Class of Compounds	Drug, Preservatives, Base, Hydrophobic, Ionizable
Analyzing Compounds	Codeine, Methyl Paraben, Propyl Paraben

HPLC Column Used

Primesep C, 4.6x150 mm, 5 µm, 100A

[Order this column at hplc-shop.de →](#)