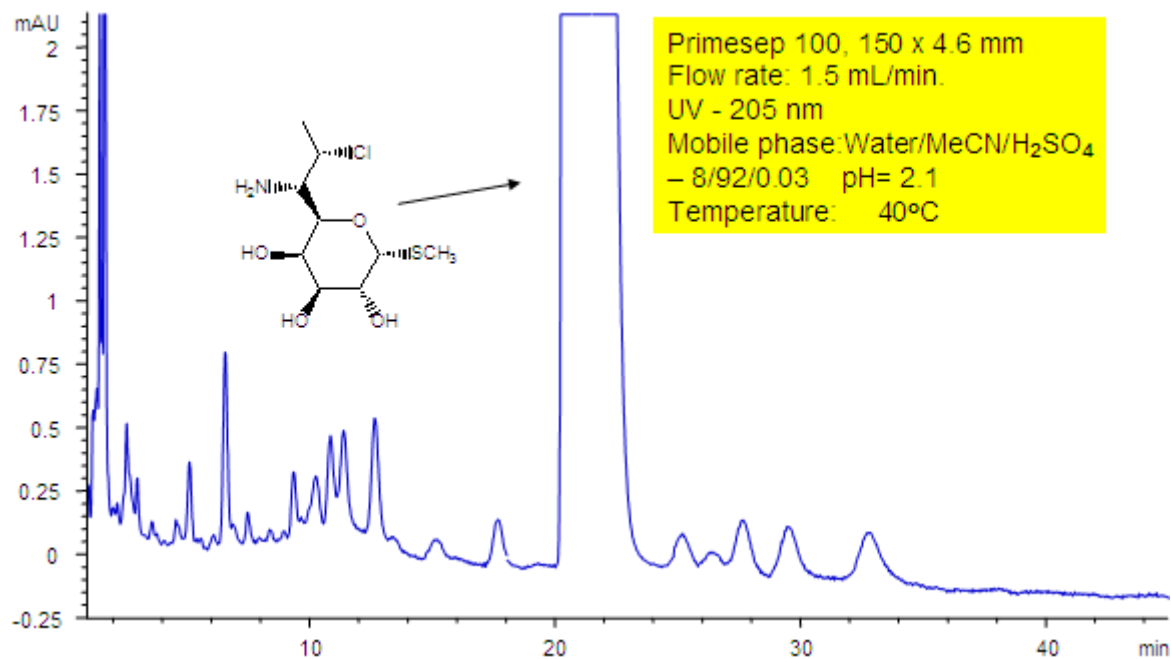


Amino Sugars Analysis in Ion Exchange and Reverse Mode

<https://sielc.com/Application-Amino-Sugars-Analysis-in-Ion-Exchange-and-Reverse-Mode>

Chromatogram



Description

Primesep 100 retains an amino sugar by a combination of cation exchange and reversed phase. Columns with reversed-phase functionality alone are unable to retain this amino sugar. The polar interactions of the Primesep 100 column together with the reversed-phase interactions retain the amino sugar and resolve it from its many impurities. The separation method uses a mobile phase mixture of water, acetonitrile (MeCN, ACN) and sulfuric acid (H₂SO₄) with UV detection at 205 nm.

Method Parameters

Mobile Phase	MeCN/H ₂ O
Buffer	H ₂ SO ₄
Flow Rate	1.5 ml/min
Detection	UV 205 nm
Class of Compounds	Hydrophilic, Ionizable
Analyzing Compounds	Sugars

HPLC Column Used

Primesep 100, 4.6x150 mm, 5 µm, 100A

[Order this column at hplc-shop.de →](#)