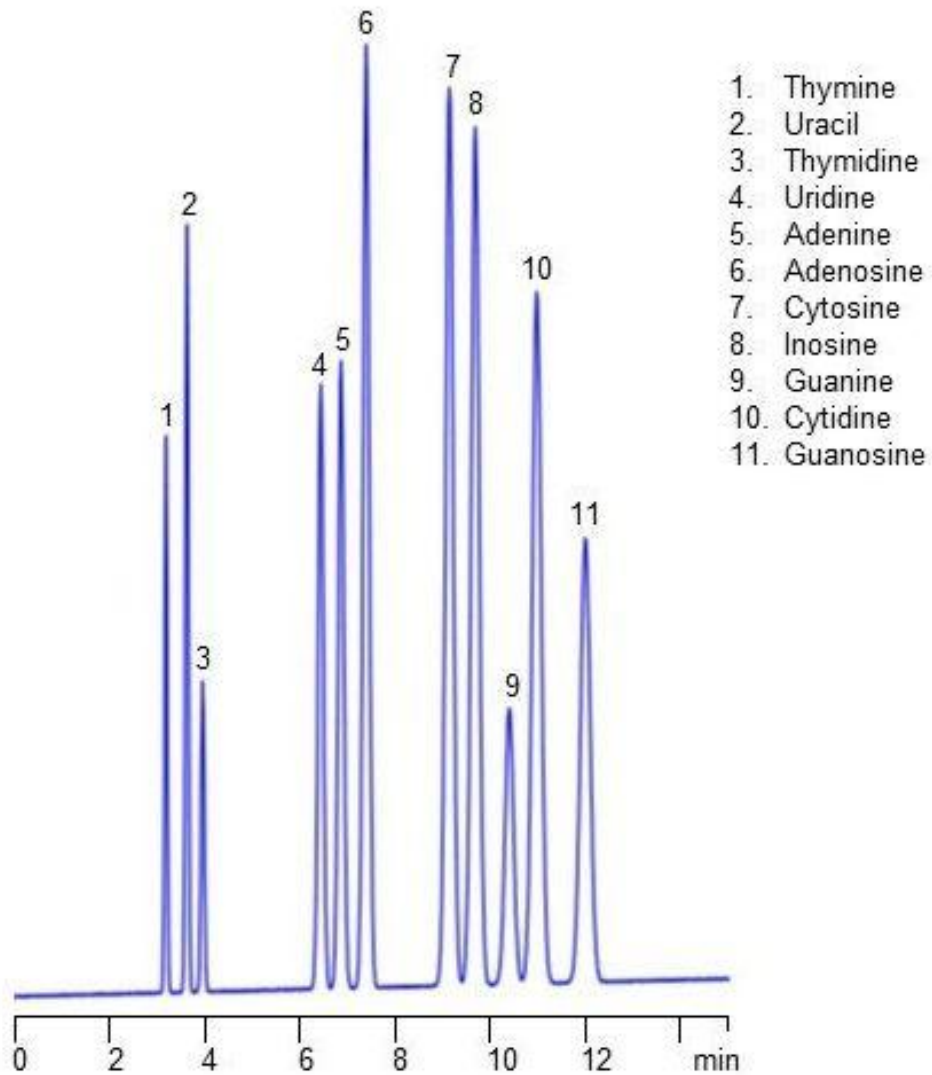


HPLC Separation of Nucleobases and Nucleosides on Amaze TCH HILIC Mixed-Mode column



Column: Amaze TCH

Column Dimensions: 4.6x150 mm, 3 µm, 100Å

Mobile Phase: ACN/Water with 10 mM AmAc

Detection: 255 nm

Sample: 0.2-0.5 mg/ml

Injection: 2 µL

Compounds: Thymine, Uracil, Thymidine, Uridine, Adenine, Adenosine, Cytosine, Inosine, Guanine, Cytidine, Guanosine