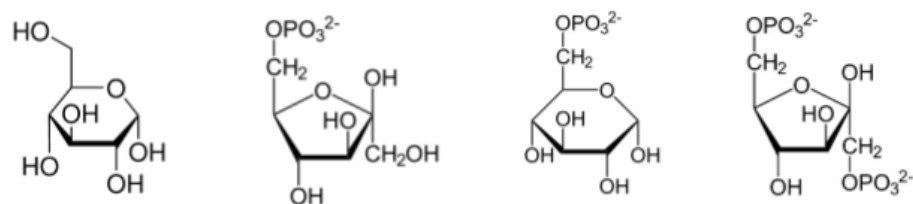
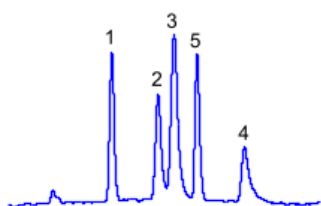


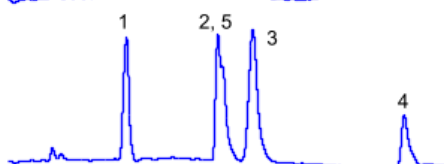
HPLC Separation of Sugar Phosphates on Amaze HD Mixed-Mode Column



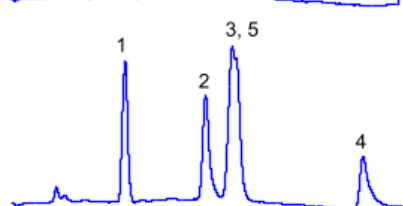
1. Glucose
2. Fructose-6-phosphate
3. Glucose-6-phosphate
4. Fructose-1,6-diphosphate
5. Sodium ion



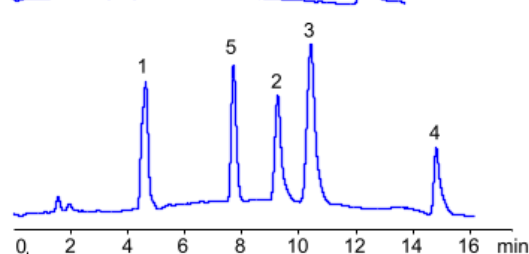
A: 65% ACN with 60 mM AmAc pH 5
B: 65% ACN with 20 mM AmAc pH 5
 From 100% A to 100% B in 10 min



A: 68% ACN with 50 mM AmAc pH 5
B: 68% ACN with 10 mM AmAc pH 5
 From 100% A to 100% B in 10 min, 5 min hold



A: 68% ACN with 50 mM AmAc pH 5
B: 68% ACN with 6 mM AmAc pH 5
 From 100% A to 100% B in 10 min, 5 min hold



A: 70% ACN with 60 mM AmAc pH 5
B: 70% ACN with 10 mM AmAc pH 5
 From 100% A to 100% B in 10 min, 5 min hold

Column: Amaze HD
Dimensions: 4.6x150 mm, 3 µm, 100A
Mobile phase: ACN/water/AmAc pH 5
Detection: Corona CAD
Sample: 1 mg/ml each
Injection: 2 µL

Column: Amaze HD

Separation Modes: HILIC, anion-exclusion

Column Dimensions: 4.6x150 mm, 3 µm, 100A

Mobile Phase: ACN/water/AmAc pH 5

Detection: Corona CAD

Sample: 1 mg/ml

Injection: 2 µL

Flow rate: 1 ml/min

Compounds: Glucose, Fructose-6-phosphate, Glucose-6-phosphate, Fructose-1,6-diphosphate, Sodium ion

Ihr Ansprechpartner:

AugustaChrom – Dr. Roland Kießwetter

info@hplc-shop.de

Tel. +49 821 599 783 70